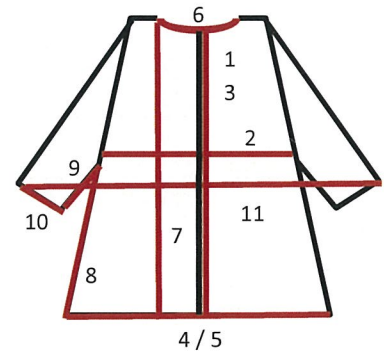
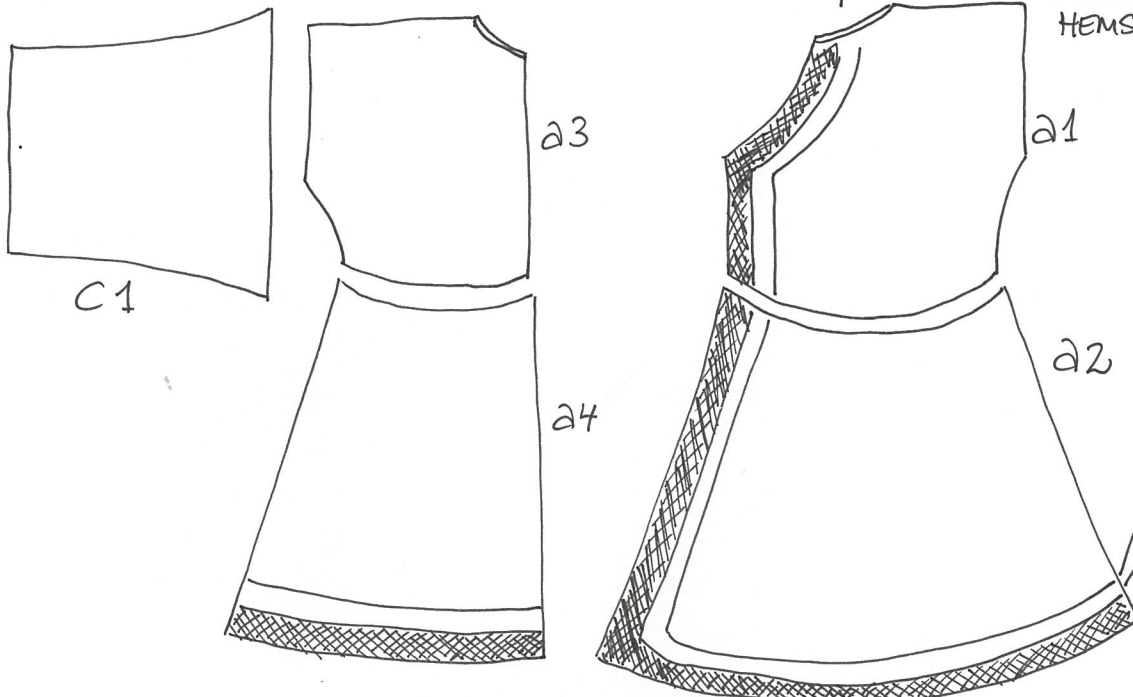


Costume name / Dragtnavn		Giljakkvinde_1	
Inv.no. / Inventarnummer		Kd.5	
Identification / ObjectID		91082	
	Coat	Frakke	cm
1	Back length	Ryglængde	110
2	Chest width	Brystvidde	114
3	Front length	Forlængde	103
4	Lower circumference	Undervidde	214
5	--" with overlap	--" med overlappning	269
6	Neck circumference		42
7	Shoulder height	Skulderhøjde	105
8	Side height	Sidehøjde	68
9	Sleeve length	Ærmeinderlængde	47
10	Wrist circumference	Håndledsomkreds	36
11	Wrist-to-wrist length	Favnmaal	148

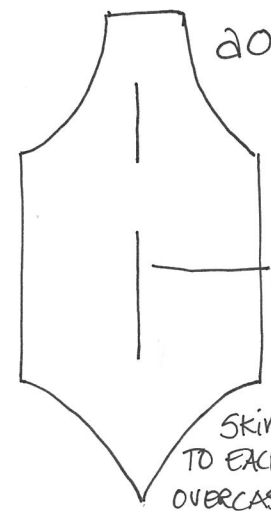
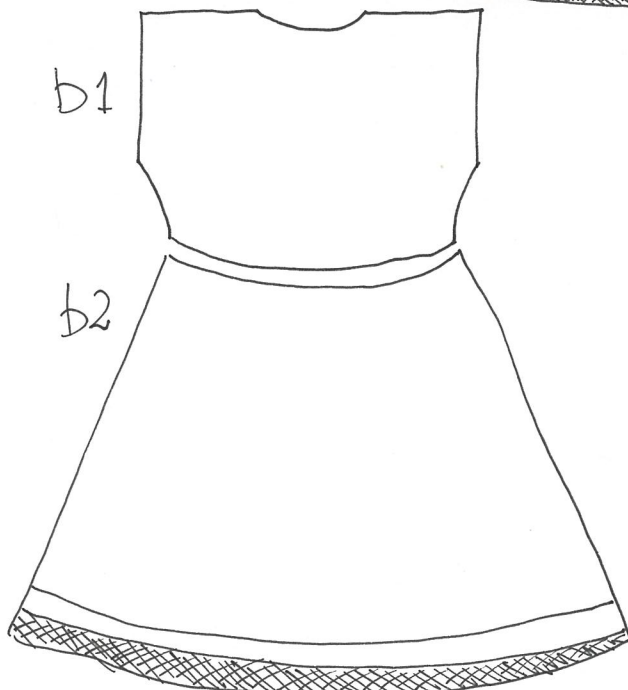


Notes / noter Anette Hjelm Petersen August 2011

1 CM WIDE SKIN SEWN TO THE NECKLINE  
IN OVERCAST FROM OUTSIDE, TURNED TO  
INSIDE AND SEWN IN  
HEMSTITCH 20 PR. 10 CM



RED 0,8 CM  
WHITE 1 CM  
SORT 9 CM



SHAPE OF  
FISH SKIN.  
CUTTINGS IN  
SKIN IS  
SEWN WITH  
OVERCAST  
CA. 48 PR. 10 CM  
SKINS ARE SEWN  
TO EACH OTHER IN  
OVERCAST 50 PR. 10 CM

