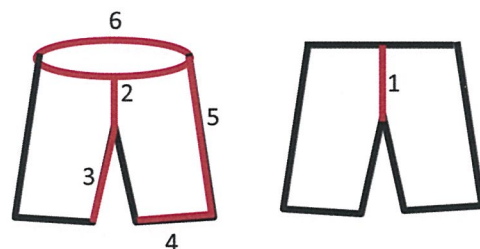
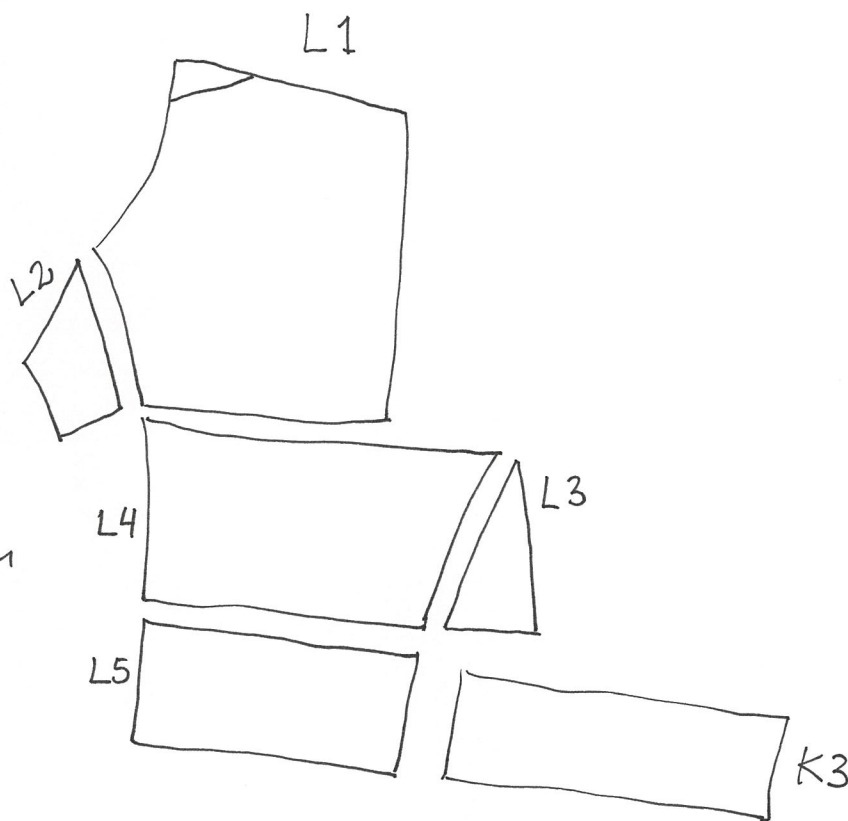
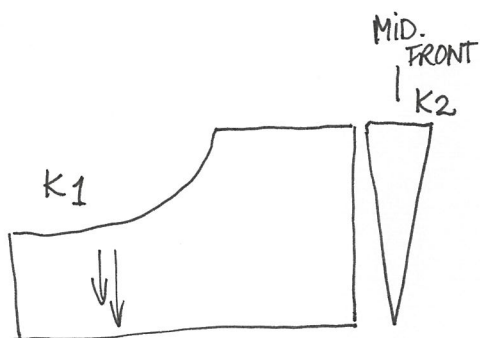


| Costume name / Dragtnavn | | Rensdyrmand_1 | |
|---------------------------|-------------------------|-----------------------|-----|
| Inv.no. / Inventarnummer | | P28.14 | |
| Identification / ObjectID | | 34953 | |
| | Trousers | Bukser | cm |
| 1 | Back rise length | Skridthøjde bag | 50 |
| 2 | Front rise length | Skridthøjde for | 30 |
| 3 | Inseam length | Skridtlængde/indersøm | 35 |
| 4 | Leg opening | Benomkreds nederst | 81 |
| 5 | Trouser-leg height | Benlængde | 57 |
| 6 | Waistband circumference | Bukselinningsomkreds | 104 |



Notes /noter Anette Hjelm Petersen August 2010



WAIST BAND:

1 CM OF TOP TROUSERS

IS FOLDED TO THE BACK AND SEWN WITH HEMSTITCH: 12 PR. 10CM

K3 IS THE EDGE ON LOWER LEG. EDGE IS NOT SEWN

OVERCAST 40 PR. 10CM

